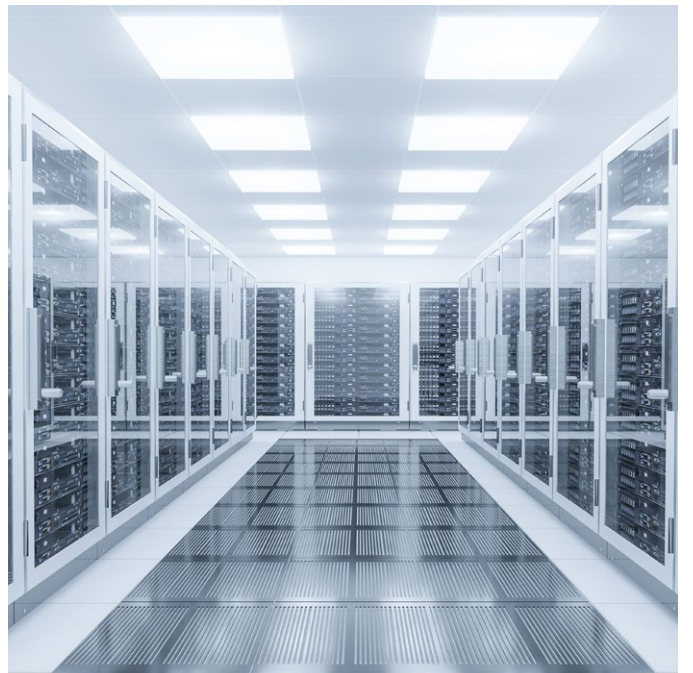
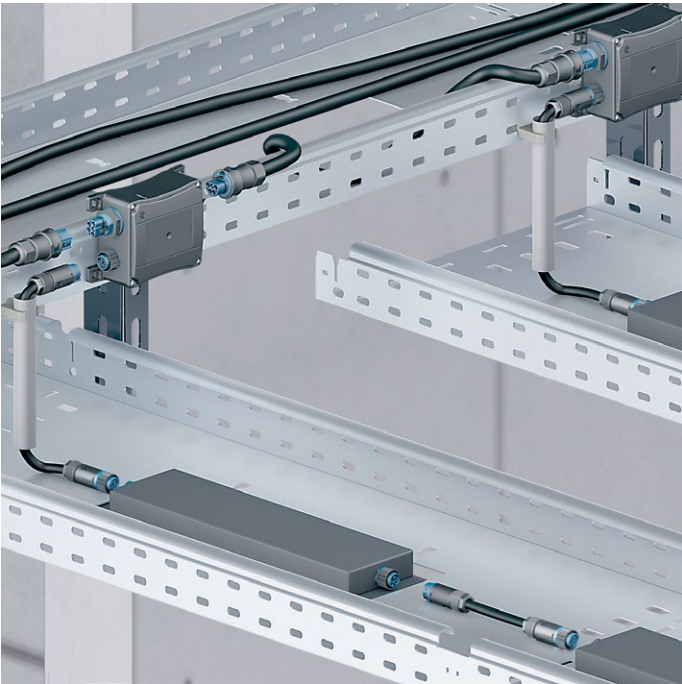
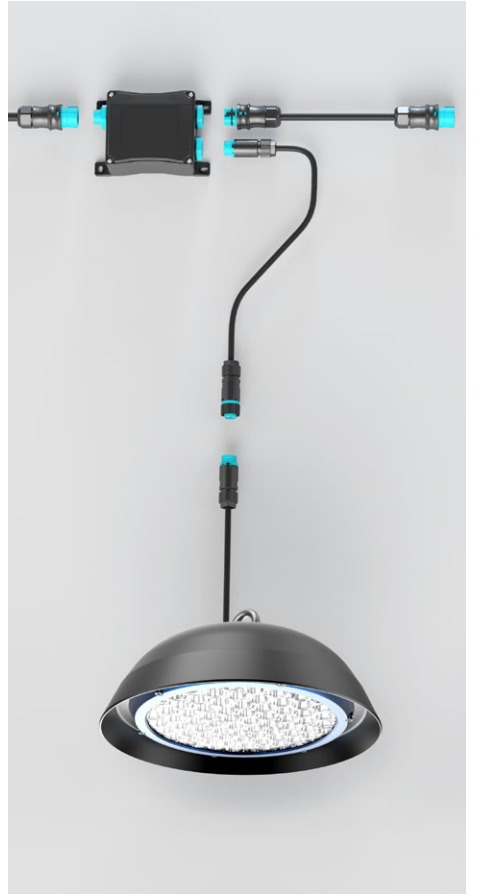


RST®

OUTDOOR LIGHTING SOLUTIONS

Highest Protection Connectors Rated for North America



CONTENTS

| | | |
|---------------------|---|----|
| RST® MINI | Introduction – RST16 | 7 |
| | RST16i Plug connectors, 2-5 poles | 9 |
| | RST16i Device connectors, 2-5 poles | 10 |
| | RST16i Distributors, 2-5 poles | 11 |
| | RST16 Accessories | 12 |
| RST® CLASSIC | Introduction – RST20 | 13 |
| | RST20i2/3 Plug connectors, 2-3 poles | 15 |
| | RST20i2/3 Device connectors, 2-3 poles | 17 |
| | RST20i2/3 Distributors, 2-3 poles | 19 |
| | RST20i4/5 Plug connectors, 4-5 poles | 20 |
| | RST20i4/5 Device connectors, 4-5 poles | 21 |
| | RST20i4/5 Distributors, 4-5 poles | 22 |
| | RST20i6/7 Plug connectors, 6-7 poles | 23 |
| | RST20i6/7 Device connectors 6-7 poles | 24 |
| | RST20i6/7 Splitters 6-7 poles | 25 |
| | RST25i3 Plug connectors, splitter, 3-pole | 26 |
| | RST25i3 Device connector, 3-pole | 27 |
| | RST25i5 Plug connectors, splitter, 5-pole | 28 |
| | RST25i5 Device connector, 5-pole | 29 |
| | RST16/20 Cable Assemblies | 30 |
| | RST20/25 Accessories | 31 |
| RST® POWER | Introduction – RST50 | 33 |
| | RST50i4/5 Plug connectors, device connectors, 4-5 poles | 34 |
| | RST50 Accessories | 35 |
| Cable Glands | Cable Gland + Vented Plugs at a Glance | 36 |

FAST, EASY + SAFE INSTALLATION

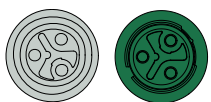
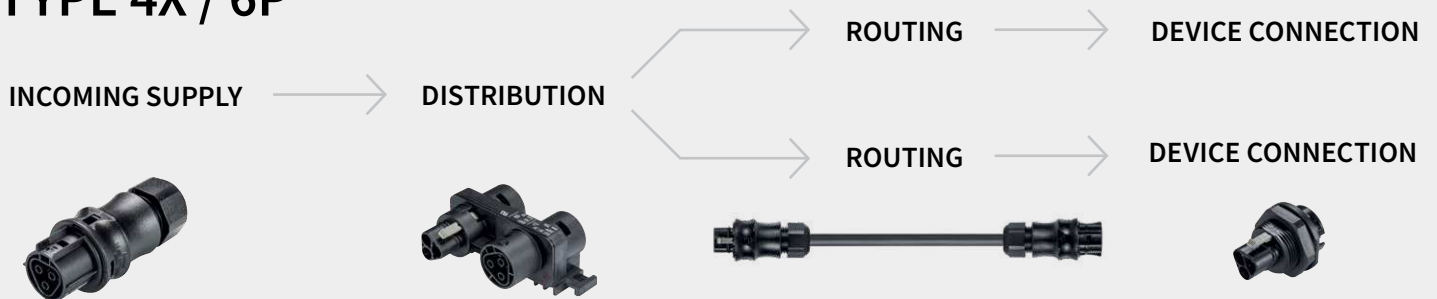
If you could save 75% of the installation time of your electrical system what would you do with the extra time?

Would you win more projects, focus on expanding your operations, or perhaps develop a new product or service?

Time saved is not the only benefit that the RST® pluggable connector system brings to your project. Standard interfaces and custom cable assemblies allow you to plan ahead with confidence. Respond quickly to change requests, reuse components, and ensure a long service life for the installation.

RST® SYSTEM OVERVIEW

TYPE 4X / 6P



SMART CODING

RST® connectors ensure the highest degree of **safety** and **error-free installation** with color and mechanical coding.

SYSTEM BENEFITS

- ▶ Waterproof against high-pressure water jets
- ▶ Optional water seal for added protection when unmated
- ▶ Flexible & modular
- ▶ Fast installation & easy changes or expansions
- ▶ Resource-efficient
- ▶ Reusable & safe

FEATURES AT A GLANCE

- ▶ Type 4X / 6P
- ▶ Rated up to 600 V and 53 A
- ▶ Pre-assembled cable harnesses and distribution units
- ▶ Locking mechanism
- ▶ Color & mechanical coding

SUCCESS STORY

VERTICAL CITY FARM APPLICATION

To help with a new vertical farm installation, Wieland provided its customer with a waterproof, pluggable and easy to install electrical system for its grow lights. Our engineering department worked closely with the customer to come up with a **customized electrical architecture**. The pluggable nature of the installation **saved 70% of installation time** compared to what a typical pipe and wire installation would have required.

By providing our customer with **custom cable harnesses**, they could easily replicate the system in subsequent farms, knowing exactly the lengths and type of connectors they would need. This allowed the customer to expand their business quicker and gain customers faster than their competitor. In addition, the smart coding system of the connectors **eliminated installation errors** and did not require a special skills worker to be installed.

CONVENTIONAL INSTALLATION



20 MIN

STEPS:

- POWER DISTRIBUTION:**
 - 1 Cut the cable to length
 - 2 Strip the cable sheath
 - 3 Insert the cable into the junction box
 - 4 Strip the wire insulation
 - 5 Connect the individual wires
 - 6 Close the junction box
- LIGHTING INSTALLATION:**
 - 1 Open the luminaire
 - 2 Cut the cable to length
 - 3 Insert the wire into the luminaire
 - 4 Strip the wire insulation
 - 5 Connect the individual wires
 - 6 Close the luminaire

PLUGGABLE INSTALLATION FROM WIELAND WITH RST®



4 MIN

STEPS:

- POWER DISTRIBUTION:**
 - 1 Cable assemblies made to order based on your specifications
 - 2 Plug into distribution block
- LIGHTING INSTALLATION:**
 - 1 Plug & turn on!

ADDITIONAL ADVANTAGES OVER CONVENTIONAL INSTALLATION:

- + Touch-safe
- + Simple cable layout
- + Plug & play replacement of devices
- + Easy expansions or modifications
- + Reusable
- + Smart coding
- + Integrated locking and strain relief

THREE SIZES FIT ANY APPLICATION



RST® POWER

Greatest amount of energy for power-intensive applications.

4 and 5 poles,
Rated to 600 V, 53 A



RST® CLASSIC

All-purpose connector with the broadest portfolio

2 to 7 poles,
Rated to 600 V, 20 A (25 A)



RST® MINI

Small connector for extremely confined spaces

2 to 5 poles,
Rated to 600 V, 16 A

ENCLOSURE RATINGS EXPLAINED

IP Ratings:

- IP65** Dust tight & protected against water from a nozzle
- IP66** Dust tight & protected against powerful jets of water

- IP67** Dust tight & protected against temporary submersion (30min)
- IP68** Dust tight & protected against extended submersion

- IP69** Dust tight & protected against high temperature, high pressure water, and steam

Type Ratings:

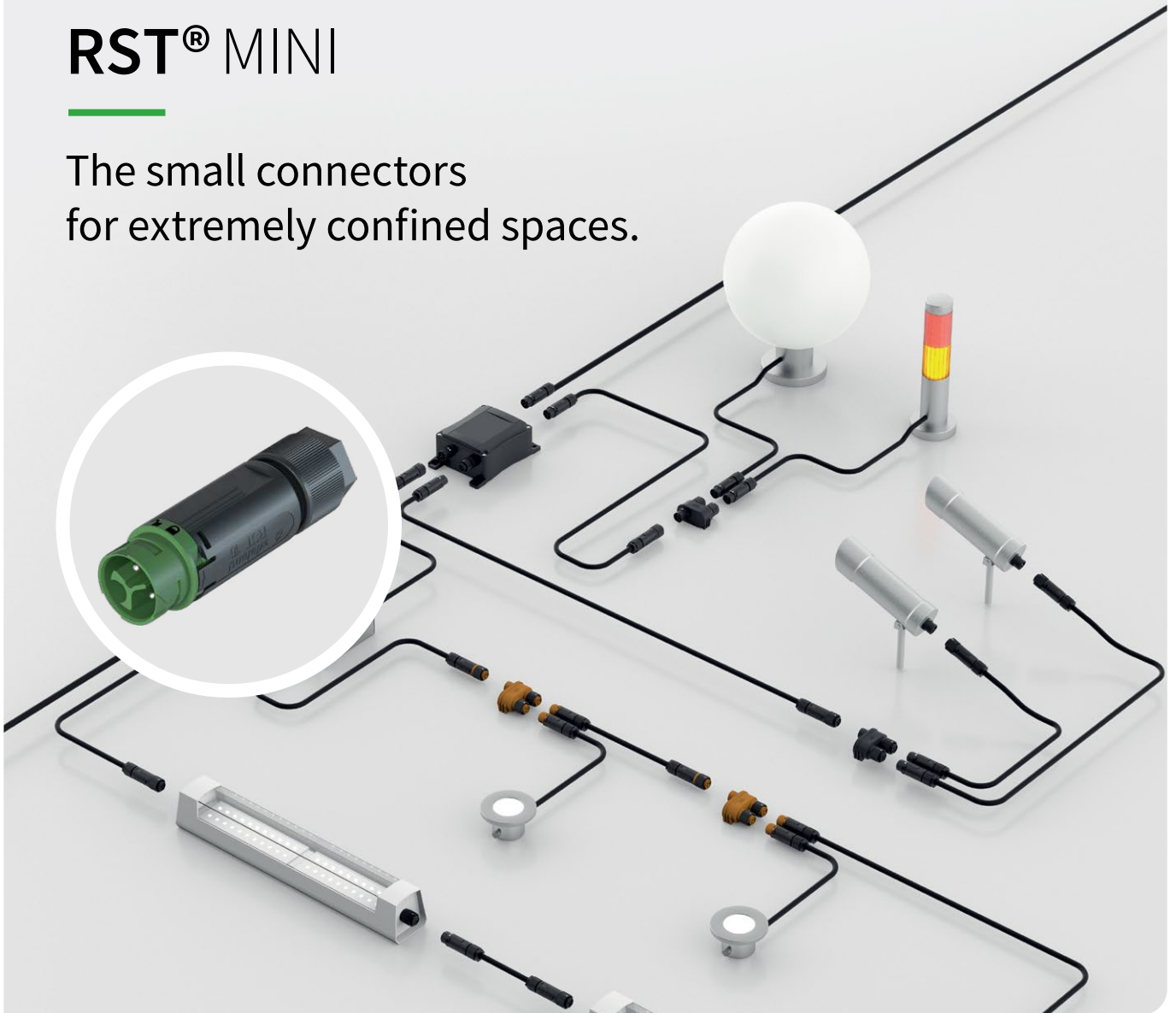
- Type 4** Protection against dust, ice and hose-directed water
- Type 4X** Type 4 protection + protection against corrosion

- Type 6** Protection against dust, ice and temporary submersion
- Type 6P** Type 6 + protection against prolonged submersion (1.8m; 24h)

All Wieland RST® connectors have a Type 4X, Type 6P or both types of protection!

RST[®] MINI

The small connectors
for extremely confined spaces.



FEATURES

- + 2 to 5 poles
- + Rated up to 600 V and 16 A
- + Mechanical + color coding
- + Locking mechanism
- + Protection up to Type 4X / 6P

APPLICATIONS

- + Outdoor and high moisture environments
- + Small spaces
- + Great for luminaire connection

RST16i2



Mechanical coding (pole configuration based on female connector) **black** **light gray** **light blue** **turquoise** **signal brown**

Operating voltage (application) up to 600 V

RST16i3



Mechanical coding (pole configuration based on female connector) **black** **light gray** **leaf green** **light blue** **turquoise** **signal brown**

Operating voltage (application) up to 600 V

RST16i4



Mechanical coding (pole configuration based on female connector) **black** **light gray** **signal brown**

Operating voltage (application) up to 600 V

RST16i5





Mechanical coding (pole configuration based on female connector) **black** **light gray** **turquoise** **signal brown**

Operating voltage (application) up to 600 V

RST16I, CONNECTOR, 2-5 POLES

SCREW CONNECTION

| TECHNICAL DATA | | | | |
|-----------------------|----------------------------|--|----------------------------|---|
| | 2/3 Poles | | 4/5 Poles | |
| | IEC |  | IEC |  |
| Cable Ø | 5.0 - 9.5 mm | | 7.1 - 13 mm | |
| Voltage | 250/400 V | 600 V | 250/400 V | 600 V |
| Current | 16 A | | 16 A | |
| Wire Size | 0.25 - 1.5 mm ² | 24 - 16 AWG | 0.25 - 2.5 mm ² | 22 - 16 AWG |
| Protection | IP69 | Type 4X | IP69 | Type 4X / 6P |
| Disconnect Under Load | | 300 Vac / 16 A | | 350 Vac / 16 A |

female

male



straight, for cables Ø 5-9.5 mm

female

male

| Color of coding | Poles | Part no. | Part no. |
|------------------|-------|---------------|---------------|
| ■ black | 2 | 46.031.4554.1 | 46.032.4554.1 |
| □ light gray | 2 | 46.031.4554.0 | 46.032.4554.0 |
| ■ light blue | 2 | 46.031.4554.9 | 46.032.4554.9 |
| ■ turquoise blue | 2 | 46.031.4551.6 | 46.032.4551.6 |
| ■ signal brown | 2 | 46.031.4551.4 | 46.032.4551.4 |

female

male



straight, for cables Ø 5-9.5 mm

female

male

| Color of coding | Poles | Part no. | Part no. |
|------------------|-------|---------------|---------------|
| ■ black | 3 | 46.031.4553.1 | 46.032.4553.1 |
| □ light gray | 3 | 46.031.4553.0 | 46.032.4553.0 |
| ■ leaves green | 3 | 46.031.4555.7 | 46.032.4555.7 |
| ■ light blue | 3 | 46.031.4553.9 | 46.032.4553.9 |
| ■ turquoise blue | 3 | 46.031.4550.6 | 46.032.4550.6 |
| ■ signal brown | 3 | 46.031.4550.4 | 46.032.4550.4 |

female

male



straight, for cables Ø 7.1-13 mm

female

male

| Color of coding | Poles | Part no. | Part no. |
|-----------------|-------|---------------|---------------|
| ■ black | 4 | 46.051.4554.1 | 46.052.4554.1 |
| □ light gray | 4 | 46.051.4554.0 | 46.052.4554.0 |
| ■ signal brown | 4 | 46.051.4551.4 | 46.052.4551.4 |

female

male



straight, for cables Ø 7.1-13 mm

female



male

| Color of coding | Poles | Part no. | Part no. |
|------------------|-------|---------------|---------------|
| ■ black | 5 | 46.051.4553.1 | 46.052.4553.1 |
| □ light gray | 5 | 46.051.4553.0 | 46.052.4553.0 |
| ■ turquoise blue | 5 | 46.051.4553.6 | 46.052.4553.6 |
| ■ signal brown | 5 | 46.051.4550.4 | 46.052.4550.4 |

RST16I, DEVICE CONNECTOR, 2-5 POLES

SCREW CONNECTION

TECHNICAL DATA

| | 2/3 Poles | | 4/5 Poles | |
|-----------------------|----------------------------|---|----------------------------|---|
| | IEC |  | IEC |  |
| Thread Size | M16 | | M20 | |
| Voltage | 250/400 V | 600 V | 250/400 V | 600 V |
| Current | 16 A | | 16 A | |
| Wire Size | 0.25 - 1.5 mm ² | 24 - 16 AWG | 0.25 - 2.5 mm ² | 22 - 16 AWG |
| Protection | IP69 | Type 4X | IP69 | Type 4X / 6P |
| Disconnect Under Load | | 300 Vac / 16 A | | 350 Vac / 16 A |

female

male



standard, straight, M16

| Color of coding | Poles | female Part no. | male Part no. |
|------------------|-------|-----------------|---------------|
| ■ black | 2 | 46.031.5054.1 | 46.032.5054.1 |
| □ light gray | 2 | 46.031.5054.0 | 46.032.5054.0 |
| ■ light blue | 2 | 46.031.5054.9 | 46.032.5054.9 |
| ■ turquoise blue | 2 | 46.031.5051.6 | 46.032.5051.6 |
| ■ signal brown | 2 | 46.031.5051.4 | 46.032.5051.4 |

female

male



standard, straight, M16

| Color of coding | Poles | female Part no. | male Part no. |
|------------------|-------|-----------------|---------------|
| ■ black | 3 | 46.031.5053.1 | 46.032.5053.1 |
| □ light gray | 3 | 46.031.5053.0 | 46.032.5053.0 |
| ■ leaves green | 3 | 46.031.5055.7 | 46.032.5055.7 |
| ■ light blue | 3 | 46.031.5053.9 | 46.032.5053.9 |
| ■ turquoise blue | 3 | 46.031.5050.6 | 46.032.5050.6 |
| ■ signal brown | 3 | 46.031.5050.4 | 46.032.5050.4 |

female

male



standard, straight, M20

| Color of coding | Poles | female Part no. | male Part no. |
|-----------------|-------|-----------------|---------------|
| ■ black | 4 | 46.051.5054.1 | 46.052.5054.1 |
| □ light gray | 4 | 46.051.5054.0 | 46.052.5054.0 |
| ■ signal brown | 4 | 46.051.5051.4 | 46.052.5051.4 |

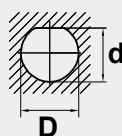
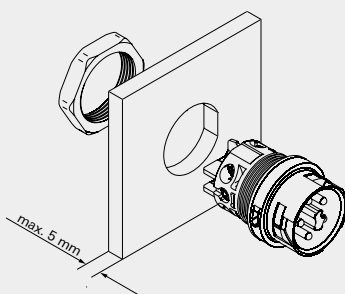
female

male



standard, straight, M20

| Color of coding | Poles | female Part no. | male Part no. |
|------------------|-------|-----------------|---------------|
| ■ black | 5 | 46.051.5053.1 | 46.052.5053.1 |
| □ light gray | 5 | 46.051.5053.0 | 46.052.5053.0 |
| ■ light blue | 5 | 46.051.5053.9 | 46.052.5053.9 |
| ■ turquoise blue | 5 | 46.051.5053.6 | 46.052.5053.6 |
| ■ signal brown | 5 | 46.051.5050.4 | 46.052.5050.4 |





TWIST PROTECTION

The flat section on the the thread prevents the connector from rotating!

| Product | Hole Size | D | d | Panel thickness |
|---------|-----------|------------|------------|-----------------|
| RST16i | M16 | 16.2 ± 0.1 | 14.6 ± 0.1 | 5 mm |
| RST16i | M20 | 20.4 ± 0.1 | 19.4 ± 0.1 | 5 mm |

RST16I, DISTRIBUTOR, 2-5 POLES

| TECHNICAL DATA | | | | |
|-----------------------|----------------------------|--|----------------------------|---|
| | 2/3 Poles | | 4/5 Poles | |
| | IEC |  | IEC |  |
| Cable Ø | 5.0 - 9.5 mm | | 7.1 - 13 mm | |
| Voltage | 250/400 V | 600 V | 250/400 V | 600 V |
| Current | 16 A | | 16 A | |
| Wire Size | 0.25 - 1.5 mm ² | 24 - 16 AWG | 0.25 - 2.5 mm ² | 22 - 16 AWG |
| Protection | IP69 | Type 4X | IP69 | Type 4X / 6P |
| Disconnect Under Load | | 300 Vac / 16 A | | 350 Vac / 16 A |



distribution block 1I / 20, parallel connection, with fastening option to mounting plate 06.562.5853.0 / 06.562.5853.1

| Color of coding | Poles | Part no. |
|------------------|-------|---------------|
| ■ black | 2/3 | 46.030.1253.1 |
| □ light gray | 2/3 | 46.030.1253.0 |
| ■ leaves green | 3 | 46.030.1255.7 |
| ■ light blue | 2/3 | 46.030.1253.9 |
| ■ turquoise blue | 2/3 | 46.030.1250.6 |
| ■ signal brown | 2/3 | 46.030.1250.4 |



compact distributor 1I / 30, parallel connection, with fastening option

| Color of coding | Poles | Part no. |
|------------------|-------|----------|
| ■ black | 2/3 | |
| □ light gray | 2/3 | |
| ■ leaves green | 3 | |
| ■ light blue | 2/3 | |
| ■ turquoise blue | 2/3 | |
| ■ signal brown | 2 | |

Please contact us for part numbers and options.



distribution block 1I / 20, parallel connection, with fastening option to mounting plate 06.562.5853.0 / 06.562.5853.1

| Color of coding | Poles | Part no. |
|------------------|-------|---------------|
| ■ black | 4/5 | 46.050.1253.1 |
| □ light gray | 4/5 | 46.050.1253.0 |
| ■ light blue | 5 | 46.050.1253.9 |
| ■ turquoise blue | 5 | 46.050.1253.6 |
| ■ signal brown | 4/5 | 46.050.1250.4 |



compact distributor 1I / 30, parallel connection, with fastening option

| Color of coding | Poles | Marking of poles | Part no. |
|------------------|-------|------------------|----------|
| ■ black | 4/5 | | |
| □ light gray | 4/5 | | |
| ■ light blue | 5 | | |
| ■ turquoise blue | 5 | | |
| ■ signal brown | 4/5 | | |

Please contact us for part numbers and options.

RST16, ACCESSORIES



Cover piece, tethered

| Color | Poles | for male | for female |
|--------------|-------|---------------|---------------|
| | | Part no. | Part no. |
| ■ black | 2/3 | 06.563.8953.1 | 06.563.8753.1 |
| □ light gray | 2/3 | 06.563.8953.0 | 06.563.8753.0 |
| ■ black | 4/5 | 06.563.9353.1 | 06.563.9153.1 |
| □ light gray | 4/5 | 06.563.9353.0 | 06.563.9153.0 |



Cover piece, untethered

| Color | Poles | for male | for female |
|--------------|-------|---------------|---------------|
| | | Part no. | Part no. |
| ■ black | 2/3 | 06.563.8853.1 | 06.563.8653.1 |
| □ light gray | 2/3 | 06.563.8853.0 | 06.563.8653.0 |
| ■ black | 4/5 | 06.563.9253.1 | 06.563.9053.1 |
| □ light gray | 4/5 | 06.563.9253.0 | 06.563.9053.0 |



Sealing ring

| Color | Ø size | Part no. |
|---------|--------------|---------------|
| ■ black | 5.0 - 9.5 mm | 06.562.0583.0 |
| ■ black | 7.1 - 13 mm | 06.561.8383.0 |



Mounting plate, for distribution terminal block

| Color | Part no. |
|--------------|---------------|
| ■ black | 06.562.5853.1 |
| □ light gray | 06.562.5853.0 |



Sample case, RST16i3

| Part no. |
|---------------|
| 99.674.0000.0 |



Sample case, RST16i5

| Part no. |
|---------------|
| 99.675.0000.0 |

RST® CLASSIC

The all-purpose connector with the most extensive range.



FEATURES

- + 2 to 7 poles
- + Rated up to 20 A and 600 V
- + 25 A option
- + Mechanical + color coding
- + Optional integrated contact seal
- + Protection up to Type 4X / 6P

APPLICATIONS

- + Outdoor and high-moisture environments
- + Higher electrical loads
- + Ideal for greenhouses and vertical farms
- + Anywhere fast changes and modular designs are need
- + Applications in protection class II and extra-low voltage for LED technology

RST20i2



Mechanical coding (pole configuration based on female connector)

black

light gray

pebble gray

signal brown

Operating voltage (application)

up to 600 V

RST20i3



Mechanical coding (pole configuration based on female connector)

black

light gray

leaf green

light blue

signal brown

Operating voltage (application)

up to 600 V

RST20i4



Mechanical coding (pole configuration based on female connector)

black

light gray

signal brown

Operating voltage (application)

up to 600 V

RST20i5



Mechanical coding (pole configuration based on female connector)

black

light gray

turquoise

light blue

yellow

signal brown

Operating voltage (application)

up to 600 V

RST20i6



Mechanical coding (pole configuration based on female connector)

turquoise

Operating voltage (application)

up to 600 V

RST20i7



Mechanical coding (pole configuration based on female connector)

black

light gray

turquoise

light blue

Operating voltage (application)

up to 600 V

RST25i3



Mechanical coding (pole configuration based on female connector)

Concrete gray

Operating voltage (application)

up to 600 V

RST25i5





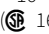
Mechanical coding (pole configuration based on female connector)

Concrete gray

Operating voltage (application)

up to 600 V

RST20I, CONNECTOR, 2/3 POLES

| TECHNICAL DATA | | | | |
|-----------------------|--|--|---------------------------|---|
| | 2/3 Poles (screw) | | 2/3 Poles (spring) | |
| | IEC |  | IEC |  |
| Cable Ø | 6 - 10 mm / 10 - 14 mm / 13 mm - 18 mm | | | |
| Voltage | 250/400 V | 600 V | 250/400 V | 600 V |
| Current | 20 A | 20 A | 20 A | 20 A (USA) 15 A (Canada) |
| Wire Size | 0.75 - 6 mm ² | 16 - 10 AWG  16-12 AWG | 0.50 - 2.5mm ² | 20 - 14 AWG |
| Protection | IP69 | Type 4X / 6P | IP69 | Type 4X/6P |
| Disconnect Under Load | | 400 Vac / 20 A (USA) 350 Vac / 20 A (Canada) | | N/A |

female



male



Straight, for cables Ø 6-10 mm

| Color of coding | Poles | Screw connection | | Spring clamp connection | |
|-----------------|-------|------------------|---------------|-------------------------|---------------|
| | | female | male | female | male |
| ■ black | 2 | 96.021.4053.1 | 96.022.4053.1 | 96.021.0053.1 | 96.022.0053.1 |
| □ light gray | 2 | 96.021.4053.0 | 96.022.4053.0 | 96.021.0053.0 | 96.022.0053.0 |
| ■ pebble gray | 2 | 96.021.4050.8 | 96.022.4050.8 | 96.021.0050.8 | 96.022.0050.8 |
| ■ signal brown | 2 | 96.021.4051.4 | 96.022.4051.4 | 96.021.0051.4 | 96.022.0051.4 |

female



male



Straight, for cables Ø 10-14 mm

| Color of coding | Poles | Screw connection | | Spring clamp connection | |
|-----------------|-------|------------------|---------------|-------------------------|---------------|
| | | female | male | female | male |
| ■ black | 2 | 96.021.4153.1 | 96.022.4153.1 | 96.021.0153.1 | 96.022.0153.1 |
| □ light gray | 2 | 96.021.4153.0 | 96.022.4153.0 | 96.021.0153.0 | 96.022.0153.0 |
| ■ pebble gray | 2 | 96.021.4150.8 | 96.022.4150.8 | 96.021.0150.8 | 96.022.0150.8 |
| ■ signal brown | 2 | 96.021.4151.4 | 96.022.4151.4 | 96.021.0151.4 | 96.022.0151.4 |

female



male



Straight, for cables Ø 6-10 mm

| Color of coding | Poles | Screw connection | | Spring clamp connection | |
|-----------------|-------|------------------|---------------|-------------------------|---------------|
| | | female | male | female | male |
| ■ black | 3 | 96.031.4053.1 | 96.032.4053.1 | 96.031.0053.1 | 96.032.0053.1 |
| □ light gray | 3 | 96.031.4053.0 | 96.032.4053.0 | 96.031.0053.0 | 96.032.0053.0 |
| ■ leaves green | 3 | 96.031.4055.7 | 96.032.4055.7 | 96.031.0055.7 | 96.032.0055.7 |
| ■ light blue | 3 | 96.031.4053.9 | 96.032.4053.9 | 96.031.0053.9 | 96.032.0053.9 |
| ■ signal brown | 3 | 96.031.4051.4 | 96.032.4051.4 | 96.031.0051.4 | 96.032.0051.4 |

female



male



Straight, for cables Ø 10-14 mm

| Color of coding | Poles | Screw connection | | Spring clamp connection | |
|-----------------|-------|------------------|---------------|-------------------------|---------------|
| | | female | male | female | male |
| ■ black | 3 | 96.031.4153.1 | 96.032.4153.1 | 96.031.0153.1 | 96.032.0153.1 |
| □ light gray | 3 | 96.031.4153.0 | 96.032.4153.0 | 96.031.0153.0 | 96.032.0153.0 |
| ■ leaves green | 3 | 96.031.4155.7 | 96.032.4155.7 | 96.031.0155.7 | 96.032.0155.7 |
| ■ light blue | 3 | 96.031.4153.9 | 96.032.4153.9 | 96.031.0153.9 | 96.032.0153.9 |
| ■ signal brown | 3 | 96.031.4151.4 | 96.032.4151.4 | 96.031.0151.4 | 96.032.0151.4 |

female






male



Straight, for cables Ø 13-18 mm

| Color of coding | Poles | Screw connection | | Spring clamp connection | |
|-----------------|-------|------------------|---------------|-------------------------|---------------|
| | | female | male | female | male |
| ■ black | 3 | 96.031.4553.1 | 96.032.4553.1 | | |
| □ light gray | 3 | 96.031.4553.0 | 96.032.4553.0 | | |
| ■ leaves green | 3 | 96.031.4555.7 | 96.032.4555.7 | 96.031.0555.7 | 96.032.0555.7 |
| ■ light blue | 3 | 96.031.4553.9 | 96.032.4553.9 | 96.031.0553.9 | 96.032.0553.9 |

RST20I, CONNECTOR, 2/3 POLES

| TECHNICAL DATA | | | | |
|-----------------------|--------------------------|--|---------------------------|---|
| | 2/3 Poles (screw) | | 2/3 Poles (spring) | |
| | IEC |  | IEC |  |
| Cable Ø | 6 - 10 mm / 10 - 14 mm | | | |
| Voltage | 250/400 V | 600 V | 250/400 V | 600 V |
| Current | 20 A | 20 A | 20 A | 20 A (USA) 15 A (Canada) |
| Wire Size | 0.75 - 6 mm ² | 16 - 10 AWG  16-12 AWG | 0.50 - 2.5mm ² | 20 - 14 AWG |
| Protection | IP69 | Type 4X / 6P | IP69 | Type 4X/6P |
| Disconnect Under Load | | 400 Vac / 20 A (USA) 350 Vac / 20 A (Canada) | | N/A |

female



male



angled 90°, for cables Ø 6-10 mm

| Color of coding | Poles | Screw Connection | | Spring Clamp Connection | |
|-----------------|-------|------------------|---------------|-------------------------|---------------|
| | | female | male | female | male |
| ■ black | 2 | 96.023.4053.1 | 96.024.4053.1 | 96.023.0053.1 | 96.024.0053.1 |
| □ light gray | 2 | 96.023.4053.0 | 96.024.4053.0 | 96.023.0053.0 | 96.024.0053.0 |
| ■ pebble gray | 2 | 96.023.4050.8 | 96.024.4050.8 | 96.023.0050.8 | 96.024.0050.8 |
| ■ signal brown | 2 | 96.023.4051.4 | 96.024.4051.4 | 96.023.0051.4 | 96.024.0051.4 |

female



male



angled 90°, for cables Ø 10-14 mm

| Color of coding | Poles | Screw connection | | Spring clamp connection | |
|-----------------|-------|------------------|---------------|-------------------------|---------------|
| | | female | male | female | male |
| ■ black | 2 | 96.023.4153.1 | 96.024.4153.1 | 96.023.0153.1 | 96.024.0153.1 |
| □ light gray | 2 | 96.023.4153.0 | 96.024.4153.0 | 96.023.0153.0 | 96.024.0153.0 |
| ■ pebble gray | 2 | 96.023.4150.8 | 96.024.4150.8 | 96.023.0150.8 | 96.024.0150.8 |
| ■ signal brown | 2 | 96.023.4151.4 | 96.024.4151.4 | 96.023.0151.4 | 96.024.0151.4 |

female



male



angled 90°, for cables Ø 6-10 mm

| Color of coding | Poles | Screw connection | | Spring clamp connection | |
|-----------------|-------|------------------|---------------|-------------------------|---------------|
| | | female | male | female | male |
| ■ black | 3 | 96.033.4053.1 | 96.034.4053.1 | 96.033.0053.1 | 96.034.0053.1 |
| □ light gray | 3 | 96.033.4053.0 | 96.034.4053.0 | 96.033.0053.0 | 96.034.0053.0 |
| ■ leaves green | 3 | 96.033.4055.7 | 96.034.4055.7 | 96.033.0055.7 | 96.034.0055.7 |
| ■ light blue | 3 | 96.033.4053.9 | 96.034.4053.9 | 96.033.0053.9 | 96.034.0053.9 |
| ■ signal brown | 3 | 96.033.4051.4 | 96.034.4051.4 | 96.033.0051.4 | 96.034.0051.4 |

female




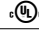

male



angled 90°, for cables Ø 10-14 mm

| Color of coding | Poles | Screw connection | | Spring clamp connection | |
|-----------------|-------|------------------|---------------|-------------------------|---------------|
| | | female | male | female | male |
| ■ black | 3 | 96.033.4153.1 | 96.034.4153.1 | 96.033.0153.1 | 96.034.0153.1 |
| □ light gray | 3 | 96.033.4153.0 | 96.034.4153.0 | 96.033.0153.0 | 96.034.0153.0 |
| ■ leaves green | 3 | 96.033.4155.7 | 96.034.4155.7 | 96.033.0155.7 | 96.034.0155.7 |
| ■ light blue | 3 | 96.033.4153.9 | 96.034.4153.9 | 96.033.0153.9 | 96.034.0153.9 |
| ■ signal brown | 3 | 96.033.4151.4 | 96.034.4151.4 | 96.033.0151.4 | 96.034.0151.4 |

RST20I, DEVICE CONNECTOR, M20, 2/3 POLES

| TECHNICAL DATA | | | | |
|-----------------------|--------------------------|--|---------------------------|---|
| | 2/3 Poles (screw) | | 2/3 Poles (spring) | |
| | IEC |  | IEC |  |
| Thread Size | M20 | | | |
| Voltage | 250/400 V | 600 V | 250/400 V | 600 V |
| Current | 20 A | 20 A | 20 A | 20 A (USA) 15 A (Canada) |
| Wire Size | 0.75 - 6 mm ² | 16 - 10 AWG  16-12 AWG | 0.50 - 2.5mm ² | 20 - 14 AWG |
| Protection | IP69 | Type 4X / 6P | IP69 | Type 4X/6P |
| Disconnect Under Load | | 400 Vac / 20 A (USA) 350 Vac / 20 A (Canada) | | N/A |

female

male



modular, straight

| Color of coding | Poles | Screw connection | | Spring clamp connection | |
|-----------------|-------|------------------|---------------|-------------------------|---------------|
| | | female | male | female | male |
| ■ black | 2 | 96.021.6053.1 | 96.022.6053.1 | 96.021.2053.1 | 96.022.2053.1 |
| □ light gray | 2 | 96.021.6053.0 | 96.022.6053.0 | 96.021.2053.0 | 96.022.2053.0 |
| ■ pebble gray | 2 | 96.021.6050.8 | 96.022.6050.8 | 96.021.2050.8 | 96.022.2050.8 |
| ■ signal brown | 2 | 96.021.6051.4 | 96.022.6051.4 | 96.021.2051.4 | 96.022.2051.4 |

female

male



modular, angled 90°

| Color of coding | Poles | Screw connection | | Spring clamp connection | |
|-----------------|-------|------------------|---------------|-------------------------|---------------|
| | | female | male | female | male |
| ■ black | 2 | 96.023.6053.1 | 96.024.6053.1 | 96.023.2053.1 | 96.024.2053.1 |
| □ light gray | 2 | 96.023.6053.0 | 96.024.6053.0 | 96.023.2053.0 | 96.024.2053.0 |
| ■ pebble gray | 2 | 96.023.6050.8 | 96.024.6050.8 | 96.023.2050.8 | 96.024.2050.8 |
| ■ signal brown | 2 | 96.023.6051.4 | 96.024.6051.4 | 96.023.2051.4 | 96.024.2051.4 |

female

male



modular, straight

| Color of coding | Poles | Screw connection | | Spring clamp connection | |
|-----------------|-------|------------------|---------------|-------------------------|---------------|
| | | female | male | female | male |
| ■ black | 3 | 96.031.6053.1 | 96.032.6053.1 | 96.031.2053.1 | 96.032.2053.1 |
| □ light gray | 3 | 96.031.6053.0 | 96.032.6053.0 | 96.031.2053.0 | 96.032.2053.0 |
| ■ leaves green | 3 | 96.031.6055.7 | 96.032.6055.7 | 96.031.2055.7 | 96.032.2055.7 |
| ■ light blue | 3 | 96.031.6053.9 | 96.032.6053.9 | 96.031.2053.9 | 96.032.2053.9 |
| ■ signal brown | 3 | 96.031.6051.4 | 96.032.6051.4 | 96.031.2051.4 | 96.032.2051.4 |

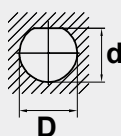
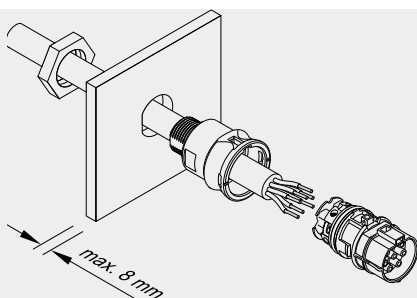
female

male



modular, angled 90°

| Color of coding | Poles | Screw connection | | Spring clamp connection | |
|-----------------|-------|------------------|---------------|-------------------------|---------------|
| | | female | male | female | male |
| ■ black | 3 | 96.033.6053.1 | 96.034.6053.1 | 96.033.2053.1 | 96.034.2053.1 |
| □ light gray | 3 | 96.033.6053.0 | 96.034.6053.0 | 96.033.2053.0 | 96.034.2053.0 |
| ■ leaves green | 3 | 96.033.6055.7 | 96.034.6055.7 | 96.033.2055.7 | 96.034.2055.7 |
| ■ light blue | 3 | 96.033.6053.9 | 96.034.6053.9 | 96.033.2053.9 | 96.034.2053.9 |
| ■ signal brown | 3 | 96.033.6051.4 | 96.034.6051.4 | 96.033.2051.4 | 96.034.2051.4 |



TWIST PROTECTION

The flat section on the the thread prevents the connector from rotating!

| Product | Hole Size | D | d | Panel thickness |
|---------|-----------|----------------------|----------------------|-----------------|
| RST20i | M20 | 20.4 ^{-0.2} | 19.0 ^{-0.2} | 8 mm |
| RST20i | M25 | 25.4 ^{-0.2} | 23.9 ^{-0.2} | 8 mm |

RST20I, DEVICE CONNECTOR, M25, 2/3 POLES

TECHNICAL DATA

| | 2/3 Poles (screw) | | 2/3 Poles (spring) | |
|-----------------------|--|---|---------------------------|-----------------------------|
| | IEC | UL [®] IS | IEC | UL [®] IS |
| Cable Ø | 6 - 10 mm / 10 - 14 mm / 13 mm - 18 mm | | | |
| Voltage | 250/400 V | 600 V | 250/400 V | 600 V |
| Current | 20 A | 20 A | 20 A | 20 A (USA) 15 A (Canada) |
| Wire Size | 0.75 - 6 mm ² | 16 - 10 AWG UL [®] 16-12 AWG | 0.50 - 2.5mm ² | 20 - 14 AWG |
| Protection | IP69 | Type 4X / 6P | IP69 | Type 4X/6P |
| Disconnect Under Load | | 400 Vac / 20 A (USA) 350 Vac / 20 A (Canada) | | N/A |

female

male



Standard, straight

| Color of coding | Poles | Screw connection | | Spring clamp connection | |
|-----------------|-------|------------------|---------------|-------------------------|---------------|
| | | female | male | female | male |
| ■ black | 2 | 96.021.5053.1 | 96.022.5053.1 | 96.021.1053.1 | 96.022.1053.1 |
| □ light gray | 2 | 96.021.5053.0 | 96.022.5053.0 | 96.021.1053.0 | 96.022.1053.0 |
| ■ pebble gray | 2 | 96.021.5050.8 | 96.022.5050.8 | 96.021.1050.8 | 96.022.1050.8 |
| ■ signal brown | 2 | 96.021.5051.4 | 96.022.5051.4 | 96.021.1051.4 | 96.022.1051.4 |

female

male



Modular, angled 90°

| Color of coding | Poles | Screw connection | | Spring clamp connection | |
|-----------------|-------|------------------|---------------|-------------------------|---------------|
| | | female | male | female | male |
| ■ black | 2 | 96.023.6253.1 | 96.024.6253.1 | 96.023.2253.1 | 96.024.2253.1 |
| □ light gray | 2 | 96.023.6253.0 | 96.024.6253.0 | 96.023.2253.0 | 96.024.2253.0 |
| ■ pebble gray | 2 | 96.023.6250.8 | 96.024.6250.8 | 96.023.2250.8 | 96.024.2250.8 |
| ■ signal brown | 2 | 96.023.6251.4 | 96.024.6251.4 | 96.023.2251.4 | 96.024.2251.4 |

female

male



Standard, straight

| Color of coding | Poles | Screw connection | | Spring clamp connection | |
|-----------------|-------|------------------|---------------|-------------------------|---------------|
| | | female | male | female | male |
| ■ black | 3 | 96.031.5053.1 | 96.032.5053.1 | 96.031.1053.1 | 96.032.1053.1 |
| □ light gray | 3 | 96.031.5053.0 | 96.032.5053.0 | 96.031.1053.0 | 96.032.1053.0 |
| ■ leaves green | 3 | 96.031.5055.7 | 96.032.5055.7 | 96.031.1055.7 | 96.032.1055.7 |
| ■ light blue | 3 | 96.031.5053.9 | 96.032.5053.9 | 96.031.1053.9 | 96.032.1053.9 |
| ■ signal brown | 3 | 96.031.5051.4 | 96.032.5051.4 | 96.031.1051.4 | 96.032.1051.4 |

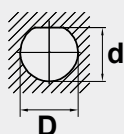
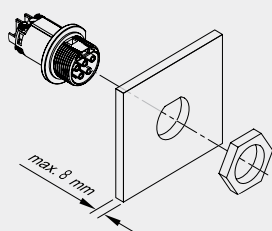
female

male



Modular, angled 90°

| Color of coding | Poles | Screw connection | | Spring clamp connection | |
|-----------------|-------|------------------|---------------|-------------------------|---------------|
| | | female | male | female | male |
| ■ black | 3 | 96.033.6253.1 | 96.034.6253.1 | 96.033.2253.1 | 96.034.2253.1 |
| □ light gray | 3 | 96.033.6253.0 | 96.034.6253.0 | 96.033.2253.0 | 96.034.2253.0 |
| ■ leaves green | 3 | 96.033.6255.7 | 96.034.6255.7 | 96.033.2255.7 | 96.034.2255.7 |
| ■ light blue | 3 | 96.033.6253.9 | 96.034.6253.9 | 96.033.2253.9 | 96.034.2253.9 |
| ■ signal brown | 3 | 96.033.6251.4 | 96.034.6251.4 | 96.033.2251.4 | 96.034.2251.4 |



TWIST PROTECTION

The flat section on the the thread prevents the connector from rotating!

| Product | Hole Size | D | d | Panel thickness |
|---------|-----------|----------------------|----------------------|-----------------|
| RST20i | M20 | 20.4 ^{-0.2} | 19.0 ^{-0.2} | 8 mm |
| RST20i | M25 | 25.4 ^{-0.2} | 23.9 ^{-0.2} | 8 mm |

RST20I, DISTRIBUTOR, 2/3 POLES

TECHNICAL DATA

| | | | |
|----------------------------|-------------------------------------|---|----------------------------------|
| Rated current: | 20 A | Lockable: | self-locking (unlocking by tool) |
| Degree of protection (IP): | IP66/68 (3m;2h) / IP69 Type 4X / 6P | Contact us for part numbers and additional options. | |



distribution block 1I / 30, parallel connection

| Color of coding | Poles | With fastening option | Without fastening option |
|-----------------|-------|-----------------------|--------------------------|
| ■ black | 2 | 96.020.0153.1 | 96.020.0253.1 |
| □ light gray | 2 | 96.020.0153.0 | 96.020.0253.0 |
| ■ pebble gray | 2 | 96.020.0150.8 | 96.020.0250.8 |
| ■ signal brown | 2 | 96.020.0151.4 | 96.020.0251.4 |



distribution block 1I / 30, parallel connection, with fastening option

| Color of coding | Poles | With fastening option | Without fastening option |
|-----------------|-------|-----------------------|--------------------------|
| ■ black | 3 | 96.030.0153.1 | 96.030.0253.1 |
| □ light gray | 3 | 96.030.0153.0 | 96.030.0253.0 |
| ■ leaves green | 3 | 96.030.0155.7 | 96.030.0255.7 |
| ■ light blue | 3 | 96.030.0153.9 | |
| ■ signal brown | 3 | 96.030.0151.4 | 96.030.0251.4 |



multi-distribution unit 1I / 70, parallel connection, with fastening option

| Color of coding | Poles | Part no. |
|-----------------|-------|--|
| ■ black | 2/3 | Distribution units made to specifications. |
| ■ signal brown | 2/3 | Please contact us for options. |



compact distributor 1I / 30, parallel connection, with fastening option

| Color of coding | Poles | Part no. |
|-----------------|-------|--|
| ■ black | 2/3 | Distribution units made to specifications. Please contact us for options. |

RST20I, CONNECTOR, 4/5 POLES

SCREW CONNECTION

| TECHNICAL DATA | | |
|-----------------------|--|------------------------------|
| | 4/5 Poles | |
| | IEC | UL |
| Cable Ø | 6 - 10 mm / 10 - 14 mm / 13 mm - 18 mm | |
| Voltage | 250/400 V | 600 V |
| Current | 20 A | 20 A |
| Wire Size | 0.75 - 4 mm ² | 18 - 14 AWG |
| Protection | IP69 | Type 4X / 6P |
| Disconnect Under Load | | 350 Vac / 20 A (Canada only) |

female

male



straight, for cables Ø 6-10 mm

| Color of coding | Poles | female Part no. | male Part no. |
|-----------------|-------|-----------------|---------------|
| ■ black | 4 | 96.041.4053.1 | 96.042.4053.1 |
| □ light gray | 4 | 96.041.4053.0 | 96.042.4053.0 |
| ■ signal brown | 4 | 96.041.4051.4 | 96.042.4051.4 |

| Color of coding | Poles | female Part no. | male Part no. |
|------------------|-------|-----------------|---------------|
| ■ black | 5 | 96.051.4053.1 | 96.052.4053.1 |
| □ light gray | 5 | 96.051.4053.0 | 96.052.4053.0 |
| ■ light blue | 5 | 96.051.4053.9 | 96.052.4053.9 |
| ■ turquoise blue | 5 | 96.051.4053.6 | 96.052.4053.6 |
| ■ yellow | 5 | 96.051.4053.2 | 96.052.4053.2 |
| ■ signal brown | 5 | 96.051.4051.4 | 96.052.4051.4 |

female

male



straight, for cables Ø 10-14 mm

| Color of coding | Poles | female Part no. | male Part no. |
|-----------------|-------|-----------------|---------------|
| ■ black | 4 | 96.041.4153.1 | 96.042.4153.1 |
| □ light gray | 4 | 96.041.4153.0 | 96.042.4153.0 |
| ■ signal brown | 4 | 96.041.4151.4 | 96.042.4151.4 |

| Color of coding | Poles | female Part no. | male Part no. |
|------------------|-------|-----------------|---------------|
| ■ black | 5 | 96.051.4153.1 | 96.052.4153.1 |
| □ light gray | 5 | 96.051.4153.0 | 96.052.4153.0 |
| ■ light blue | 5 | 96.051.4153.9 | 96.052.4153.9 |
| ■ turquoise blue | 5 | 96.051.4153.6 | 96.052.4153.6 |
| ■ yellow | 5 | 96.051.4153.2 | 96.052.4153.2 |
| ■ signal brown | 5 | 96.051.4151.4 | 96.052.4151.4 |

female

male



straight, for cables Ø 13-18 mm

| Color of coding | Poles | female Part no. | male Part no. |
|-----------------|-------|-----------------|---------------|
| ■ black | 4 | 96.041.4553.1 | 96.042.4553.1 |
| □ light gray | 4 | 96.041.4553.0 | 96.042.4553.0 |

| Color of coding | Poles | female Part no. | male Part no. |
|------------------|-------|-----------------|---------------|
| ■ black | 5 | 96.051.4553.1 | 96.052.4553.1 |
| □ light gray | 5 | 96.051.4553.0 | 96.052.4553.0 |
| ■ light blue | 5 | 96.051.4553.9 | 96.052.4553.9 |
| ■ turquoise blue | 5 | 96.051.4553.6 | 96.052.4553.6 |
| ■ yellow | 5 | 96.051.4553.2 | 96.052.4553.2 |
| ■ signal brown | 5 | 96.051.4551.4 | 96.052.4551.4 |

female

male



angled 90°, for cables Ø 6-10 mm

| Color of coding | Poles | female Part no. |
|-----------------|-------|-----------------|
| ■ black | 4 | 96.143.0053.1 |
| □ light gray | 4 | 96.143.0053.0 |

| Color of coding | Poles | female Part no. | male Part no. |
|------------------|-------|-----------------|---------------|
| ■ black | 5 | 96.053.4053.1 | 96.054.4053.1 |
| □ light gray | 5 | 96.053.4053.0 | 96.054.4053.0 |
| ■ light blue | 5 | 96.053.4053.9 | 96.054.4053.9 |
| ■ turquoise blue | 5 | 96.053.4053.6 | 96.054.4053.6 |
| ■ signal brown | 5 | 96.053.4051.4 | 96.054.4051.4 |

female

male




angled 90°, for cables Ø 10-14 mm

| Color of coding | Poles | female Part no. | male Part no. |
|-----------------|-------|-----------------|---------------|
| ■ black | 4 | 96.143.0153.1 | 96.144.0153.1 |
| □ light gray | 4 | 96.143.0153.0 | 96.144.0153.0 |

| Color of coding | Poles | female Part no. | male Part no. |
|------------------|-------|-----------------|---------------|
| ■ black | 5 | 96.053.4153.1 | 96.054.4153.1 |
| □ light gray | 5 | 96.053.4153.0 | 96.054.4153.0 |
| ■ light blue | 5 | 96.053.4153.9 | 96.054.4153.9 |
| ■ turquoise blue | 5 | 96.053.4153.6 | 96.054.4153.6 |
| ■ signal brown | 5 | 96.053.4151.4 | 96.054.4151.4 |

RST20I, DEVICE CONNECTOR, M20, 4/5 POLES

SCREW CONNECTION

| TECHNICAL DATA | | |
|-----------------------|--------------------------|---|
| | 4/5 Poles | |
| | IEC |  |
| Thread Size | M20 / M25 | |
| Voltage | 250/400 V | 600 V |
| Current | 20 A | 20 A |
| Wire Size | 0.75 - 4 mm ² | 18 - 14 AWG |
| Protection | IP69 | Type 4X / 6P |
| Disconnect Under Load | | 350 Vac / 20 A (Canada) |

female

male



modular, straight

| Color of coding | Poles |
|-----------------|-------|
| ■ black | 4 |
| □ light gray | 4 |
| ■ signal brown | 4 |

female

male

| Part no. | Part no. |
|---------------|---------------|
| 96.041.6053.1 | 96.042.6053.1 |
| 96.041.6053.0 | 96.042.6053.0 |
| 96.041.6051.4 | 96.042.6051.4 |

| Color of coding | Poles |
|------------------|-------|
| ■ black | 5 |
| □ light gray | 5 |
| ■ light blue | 5 |
| ■ turquoise blue | 5 |
| ■ signal brown | 5 |

female

male

| Part no. | Part no. |
|---------------|---------------|
| 96.051.6053.1 | 96.052.6053.1 |
| 96.051.6053.0 | 96.052.6053.0 |
| 96.051.6053.9 | 96.052.6053.9 |
| 96.051.6053.6 | 96.052.6053.6 |
| 96.051.6051.4 | 96.052.6051.4 |

female

male



modular, angled 90°

| Color of coding | Poles |
|-----------------|-------|
| ■ black | 4 |
| □ light gray | 4 |

female

male

| Part no. | Part no. |
|---------------|---------------|
| 96.043.6053.1 | 96.044.6053.1 |
| 96.043.6053.0 | 96.044.6053.0 |

| Color of coding | Poles |
|------------------|-------|
| ■ black | 5 |
| □ light gray | 5 |
| ■ light blue | 5 |
| ■ turquoise blue | 5 |
| ■ signal brown | 5 |


female

male

| Part no. | Part no. |
|---------------|---------------|
| 96.053.6053.1 | 96.054.6053.1 |
| 96.053.6053.0 | 96.054.6053.0 |
| 96.053.6053.9 | 96.054.6053.9 |
| 96.053.6053.6 | 96.054.6053.6 |
| 96.053.6051.4 | 96.054.6051.4 |

RST20I4, DEVICE CONNECTOR, M25, 4/5 POLES

SCREW CONNECTION

| TECHNICAL DATA | | |
|-----------------------|--------------------------|---|
| | 4/5 Poles | |
| | IEC |  |
| Thread Size | M20 / M25 | |
| Voltage | 250/400 V | 600 V |
| Current | 20 A | 20 A |
| Wire Size | 0.75 - 4 mm ² | 18 - 14 AWG |
| Protection | IP69 | Type 4X / 6P |
| Disconnect Under Load | 350 Vac / 20 A (Canada) | |

female



male



standard, straight

| Color of coding | Poles | female Part no. | male Part no. |
|-----------------|-------|-----------------|---------------|
| ■ black | 4 | 96.041.5053.1 | 96.042.5053.1 |
| □ light gray | 4 | 96.041.5053.0 | 96.042.5053.0 |
| ■ signal brown | 4 | 96.041.5051.4 | 96.042.5051.4 |

| Color of coding | Poles | female Part no. | male Part no. |
|------------------|-------|-----------------|---------------|
| ■ black | 5 | 96.051.5053.1 | 96.052.5053.1 |
| □ light gray | 5 | 96.051.5053.0 | 96.052.5053.0 |
| ■ light blue | 5 | 96.051.5053.9 | 96.052.5053.9 |
| ■ turquoise blue | 5 | 96.051.5053.6 | 96.052.5053.6 |
| ■ signal brown | 5 | 96.051.5051.4 | 96.052.5051.4 |

female



male



modular, angled 90°

| Color of coding | Poles | female Part no. | male Part no. |
|-----------------|-------|-----------------|---------------|
| ■ black | 4 | 96.043.6253.1 | 96.044.6253.1 |
| □ light gray | 4 | 96.043.6253.0 | 96.044.6253.0 |
| ■ signal brown | 4 | 96.043.6251.4 | 96.044.6251.4 |

| Color of coding | Poles | female Part no. | male Part no. |
|------------------|-------|-----------------|---------------|
| ■ black | 5 | 96.053.6253.1 | 96.054.6253.1 |
| □ light gray | 5 | 96.053.6253.0 | 96.054.6253.0 |
| ■ light blue | 5 | 96.053.6253.9 | 96.054.6253.9 |
| ■ turquoise blue | 5 | 96.053.6253.6 | 96.054.6253.6 |
| ■ signal brown | 5 | 96.053.6251.4 | 96.054.6251.4 |

RST20I, DISTRIBUTOR, 4/5 POLES

| TECHNICAL DATA | | | |
|----------------------------|------------------------|--|----------------------------------|
| Rated current: | 20 A | Lockable: | self-locking (unlocking by tool) |
| Degree of protection (IP): | IP66/68 (3m;2h) / IP69 | Additional technical data, see facts & data. | |
| | Type 4X / 6P | | |



compact distributor 11 / 30, parallel connection, with fastening option

| Color of coding | Poles | Part no. |
|-----------------|-------|---|
| ■ black | 4/5 | Distribution units made to specifications. Please contact us for options. |




compact distributor 11 / 20, parallel connection, with fastening option

| Color of coding | Poles | Part no. |
|-----------------|-------|---|
| ■ black | 5 | Distribution units made to specifications. Please contact us for options. |

RST20I, CONNECTOR, 6/7 POLES

SCREW CONNECTION

Optional **water seals** on individual contacts for added protection when unmated. Contact us for details.


| TECHNICAL DATA | | |
|-------------------|-------------------------------------|--|
| 6/7 Poles (screw) | | |
| | IEC |  |
| Cable Ø | 6 - 10 mm / 10 - 14 mm / 13 - 18 mm | |
| Voltage | 250/400 V | 600 V |
| Current | 3 x 20 A + 4 x 5 A | 3 x 20 A + 4 x 5 A (USA) 3 x 16 A + 4 x 2 A (Canada) *Contact us for additional combinations |
| Wire Size | 0.2 - 1.5mm ² | 20 - 14 AWG |
| Protection | IP69 | Type 4X/6P |

female

male



straight, for cables Ø 6-10 mm





| Color of coding | Poles |
|--|-------|
|  turquoise blue | 6 |

female

male

| Part no. | Part no. |
|---------------|---------------|
| 96.061.4053.6 | 96.062.4053.6 |

Color of coding Poles

| | |
|--|---|
|  black | 7 |
|  light gray | 7 |
|  light blue | 7 |
|  turquoise blue | 7 |

female

male

| Part no. | Part no. |
|---------------|---------------|
| 96.071.4053.1 | 96.072.4053.1 |
| 96.071.4053.0 | 96.072.4053.0 |
| 96.071.4053.9 | 96.072.4053.9 |
| 96.071.4053.6 | 96.072.4053.6 |

female

male



straight, for cables Ø 10-14 mm




| Color of coding | Poles |
|--|-------|
|  turquoise blue | 6 |

female

male

| Part no. | Part no. |
|---------------|---------------|
| 96.061.4153.6 | 96.062.4153.6 |

Color of coding Poles

| | |
|--|---|
|  black | 7 |
|  light gray | 7 |
|  light blue | 7 |
|  turquoise blue | 7 |

female

male


| Part no. | Part no. |
|---------------|---------------|
| 96.071.4153.1 | 96.072.4153.1 |
| 96.071.4153.0 | 96.072.4153.0 |
| 96.071.4153.9 | 96.072.4153.9 |
| 96.071.4153.6 | 96.072.4153.6 |

female

male



angled 90°, for cables Ø 6-10 mm





| Color of coding | Poles |
|--|-------|
|  turquoise blue | 6 |

female

male

| Part no. | Part no. |
|---------------|---------------|
| 96.063.4053.6 | 96.064.4053.6 |

Color of coding Poles

| | |
|--|---|
|  black | 7 |
|  light gray | 7 |
|  light blue | 7 |
|  turquoise blue | 7 |

female

male


| Part no. | Part no. |
|---------------|---------------|
| 96.073.4053.1 | 96.074.4053.1 |
| 96.073.4053.0 | 96.074.4053.0 |
| 96.073.4053.9 | 96.074.4053.9 |
| 96.073.4053.6 | 96.074.4053.6 |

female

male



angled 90°, for cables Ø 10-14 mm





| Color of coding | Poles |
|--|-------|
|  turquoise blue | 6 |

female

male

| Part no. | Part no. |
|---------------|---------------|
| 96.063.4153.6 | 96.064.4153.6 |

Color of coding Poles

| | |
|--|---|
|  black | 7 |
|  light gray | 7 |
|  light blue | 7 |
|  turquoise blue | 7 |


female

male

| Part no. | Part no. |
|---------------|---------------|
| 96.073.4153.1 | 96.074.4153.1 |
| 96.073.4153.0 | 96.074.4153.0 |
| 96.073.4153.9 | 96.074.4153.9 |
| 96.073.4153.6 | 96.074.4153.6 |

RST20I, DEVICE CONNECTOR, M20, 6/7 POLES

SCREW CONNECTION

| TECHNICAL DATA | | |
|----------------|--------------------------|--|
| | 6/7 Poles (screw) | |
| | IEC |  |
| Thread Size | M20 / M25 | |
| Voltage | 250/400 V | 600 V |
| Current | 3 x 20 A + 4 x 5 A | 3 x 20 A + 4 x 5 A (USA) 3 x 16 A + 4 x 2 A (Canada) *Contact us for additional combinations |
| Wire Size | 0.2 - 1.5mm ² | 20 - 14 AWG |
| Protection | IP69 | Type 4X/6P |

female

male



modular, straight





| Color of coding | Poles |
|--|-------|
|  turquoise blue | 6 |

female

male

| Part no. | Part no. |
|---------------|---------------|
| 96.061.6053.6 | 96.062.6053.6 |

modular, straight

| Color of coding | Poles |
|--|-------|
|  black | 7 |
|  light gray | 7 |
|  light blue | 7 |
|  turquoise blue | 7 |

female

male


| Part no. | Part no. |
|---------------|---------------|
| 96.071.6053.1 | 96.072.6053.1 |
| 96.071.6053.0 | 96.072.6053.0 |
| 96.071.6053.9 | 96.072.6053.9 |
| 96.071.6053.6 | 96.072.6053.6 |

female

male



modular, angled 90°


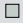


| Color of coding | Poles |
|--|-------|
|  turquoise blue | 6 |

female

male

| Part no. | Part no. |
|---------------|---------------|
| 96.063.6053.6 | 96.064.6053.6 |

modular, angled 90°

| Color of coding | Poles |
|--|-------|
|  black | 7 |
|  light gray | 7 |
|  light blue | 7 |
|  turquoise blue | 7 |

female

male

| Part no. | Part no. |
|---------------|---------------|
| 96.073.6053.1 | 96.074.6053.1 |
| 96.073.6053.0 | 96.074.6053.0 |
| 96.073.6053.9 | 96.074.6053.9 |
| 96.073.6053.6 | 96.074.6053.6 |

RST20I7, DEVICE CONNECTOR, M25, 7 POLES


SCREW CONNECTION

female

male



modular, straight





| Color of coding | Poles |
|--|-------|
|  turquoise blue | 6 |

female

male

| Part no. | Part no. |
|---------------|---------------|
| 96.061.6253.6 | 96.062.6253.6 |

modular, straight

| Color of coding | Poles |
|--|-------|
|  black | 7 |
|  light gray | 7 |
|  light blue | 7 |
|  turquoise blue | 7 |

female

male


| Part no. | Part no. |
|---------------|---------------|
| 96.071.6253.1 | 96.072.6253.1 |
| 96.071.6253.0 | 96.072.6253.0 |
| 96.071.6253.9 | 96.072.6253.9 |
| 96.071.6253.6 | 96.072.6253.6 |

female

male



modular, angled 90°





| Color of coding | Poles |
|--|-------|
|  turquoise blue | 6 |

female

male

| Part no. | Part no. |
|---------------|---------------|
| 96.063.6253.6 | 96.064.6253.6 |

modular, angled 90°

| Color of coding | Poles |
|--|-------|
|  black | 7 |
|  light gray | 7 |
|  light blue | 7 |
|  turquoise blue | 7 |


female

male

| Part no. | Part no. |
|---------------|---------------|
| 96.073.6253.1 | 96.074.6253.1 |
| 96.073.6253.0 | 96.074.6253.0 |
| 96.073.6253.9 | 96.074.6253.9 |
| 96.073.6253.6 | 96.074.6253.6 |

RST20I, CONNECTOR, 6/7 POLES

SCREW CONNECTION

| TECHNICAL DATA | | |
|----------------|--------------------------|---|
| | 6/7 Poles (screw) | |
| | IEC |  |
| Cable Ø | 6 - 10 mm / 10 - 14 mm | |
| Voltage | 250/400 V | 600 V |
| Current | 3 x 20 A + 4 x 5 A | 3 x 20 A + 4 x 5 A (USA) 3 x 16 A + 4 x 2 A (Canada) |
| Wire Size | 0.2 - 1.5mm ² | 20 - 14 AWG |
| Protection | IP69 | Type 4X/6P |


female





male



splitter connector, for cables Ø 6-10 mm

female

| Color of coding | Poles | Part no. |
|--|-------|---------------|
|  turquoise blue | 6 | 96.061.4253.6 |


| Color of coding | Poles | female Part no. | male Part no. |
|--|-------|-----------------|---------------|
|  black | 7 | 96.071.4253.1 | 96.072.4253.1 |
|  light gray | 7 | 96.071.4253.0 | |
|  light blue | 7 | 96.071.4253.9 | |
|  turquoise blue | 7 | 96.071.4253.6 | 96.072.4253.6 |



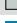

female



splitter connector, for cables Ø 10-14 mm


female

| Color of coding | Poles | Part no. |
|--|-------|---------------|
|  turquoise blue | 6 | 96.061.4353.6 |

| Color of coding | Poles | female Part no. |
|--|-------|-----------------|
|  black | 7 | 96.071.4353.1 |
|  light gray | 7 | 96.071.4353.0 |
|  light blue | 7 | 96.071.4353.9 |
|  turquoise blue | 7 | 96.071.4353.6 |

RST25I3, CONNECTOR, 3 POLES

SCREW CONNECTION

| TECHNICAL DATA | | |
|----------------|--|---|
| | 3 Poles (Screw) | |
| | IEC |  |
| Cable Ø | 6 - 10 mm / 10 - 14 mm / 13 mm - 18 mm | |
| Voltage | 250/400 V | 600 V |
| Current | 25 A | 25 A |
| Wire Size | 0.75 - 6 mm ² | 12 AWG Solid |
| Protection | IP69 | Type 4X / 6P |

female

male



straight, for cables Ø 6-10 mm

Color of coding Poles

■ concrete gray 3

female

male

Part no.

Part no.

96.031.4054.3

96.032.4054.3

straight, for cables Ø 10-14 mm

Color of coding Poles

■ concrete gray 3

female

male

Part no.

Part no.

96.031.4154.3

96.032.4154.3

female

male



straight, for cables Ø 13-18 mm

Color of coding Poles

■ concrete gray 3

female

male

Part no.

Part no.

96.031.4554.3

96.032.4554.3

female

male



angled 90°, for cables Ø 6-10 mm

Color of coding Poles

■ concrete gray 3

female

male

Part no.

Part no.

96.033.4054.3

96.034.4054.3

angled 90°, for cables Ø 10-14 mm

Color of coding Poles

■ concrete gray 3

female

male

Part no.

Part no.

96.033.4154.3

96.034.4154.3

RST25I3, CONNECTOR, 3 POLES

SCREW CONNECTION

female



splitter connector, for cables Ø 6-10 mm

Color of coding Poles

■ concrete gray 3


female

Part no.

96.031.4254.3

RST25I3, DEVICE CONNECTOR, M20, 3 POLES

SCREW CONNECTION


| TECHNICAL DATA | | |
|----------------|--------------------------|---|
| | 3 Poles (Screw) | |
| | IEC |  |
| Thread Size | M20 / M25 | |
| Voltage | 250/400 V | 600 V |
| Current | 25 A | 25 A |
| Wire Size | 0.75 - 6 mm ² | 12 AWG Solid |
| Protection | IP69 | Type 4X / 6P |

female

male



modular, straight

| Color of coding | Poles |
|---|-------|
|  concrete gray | 3 |

female

male

Part no.

Part no.

96.031.6054.3


96.032.6054.3

female

male



modular, angled 90°

| Color of coding | Poles |
|--|-------|
|  concrete gray | 3 |

female

male

Part no.

Part no.

96.033.6054.3

96.034.6054.3

RST25I3, DEVICE CONNECTOR, M25, 3 POLES


SCREW CONNECTION

female

male



standard, straight

| Color of coding | Poles |
|---|-------|
|  concrete gray | 3 |

female

male

Part no.

Part no.

96.031.5054.3


96.032.5054.3

female

male



modular, angled 90°

| Color of coding | Poles |
|---|-------|
|  concrete gray | 3 |

female

male

Part no.


Part no.

96.033.6254.3

96.034.6254.3

RST25I5, CONNECTOR, 5 POLES

SCREW CONNECTION


| TECHNICAL DATA | | |
|----------------|--|---|
| | 5 Poles (Screw) | |
| | IEC |  |
| Cable Ø | 6 - 10 mm / 10 - 14 mm / 13 mm - 18 mm | |
| Voltage | 250/400 V | 600 V |
| Current | 25 A | 25 A |
| Wire Size | 0.75 - 6 mm ² | 12 AWG Solid |
| Protection | IP69 | Type 4X / 6P |

female

male



straight, for cables Ø 6-10 mm

| Color of coding | Poles |
|---|-------|
|  concrete gray | 5 |


female

male

| Part no. |
|---------------|
| 96.051.4054.3 |

| Part no. |
|---------------|
| 96.052.4054.3 |

straight, for cables Ø 10-14 mm

| Color of coding | Poles |
|---|-------|
|  concrete gray | 5 |

female

male

| Part no. |
|---------------|
| 96.051.4154.3 |


| Part no. |
|---------------|
| 96.052.4154.3 |

female

male



straight, for cables Ø 13-18 mm

| Color of coding | Poles |
|--|-------|
|  concrete gray | 5 |

female

male

| Part no. |
|---------------|
| 96.051.4554.3 |

| Part no. |
|---------------|
| 96.052.4554.3 |


RST25I5, CONNECTOR, 5 POLES

SCREW CONNECTION

female




splitter connector, for cables Ø 6-10 mm

| Color of coding | Poles |
|---|-------|
|  concrete gray | 5 |

female

| Part no. |
|---------------|
| 99.584.0000.7 |

splitter connector, for cables Ø 10-14 mm


| Color of coding | Poles |
|---|-------|
|  concrete gray | 5 |

female

| Part no. |
|---------------|
| 99.585.0000.7 |

RST25I5, DEVICE CONNECTOR, M20, 5 POLES

SCREW CONNECTION


| TECHNICAL DATA | | |
|----------------|--------------------------|---|
| | 5 Poles (Screw) | |
| | IEC |  |
| Thread Size | M20 / M25 | |
| Voltage | 250/400 V | 600 V |
| Current | 25 A | 25 A |
| Wire Size | 0.75 - 6 mm ² | 12 AWG Solid |
| Protection | IP69 | Type 4X / 6P |

female

male



modular, straight

| Color of coding | Poles |
|---|-------|
|  concrete gray | 5 |

female

male

Part no.

Part no.

96.051.6054.3


96.052.6054.3

female

male



modular, angled 90°

| Color of coding | Poles |
|---|-------|
|  concrete gray | 5 |

female

male

Part no.

Part no.

96.053.6054.3

96.054.6054.3

RST25I5, DEVICE CONNECTOR, M25, 5 POLES


SCREW CONNECTION

female

male



standard, straight

| Color of coding | Poles |
|---|-------|
|  concrete gray | 5 |

female

male

Part no.

Part no.

96.051.5054.3


96.052.5054.3

female

male



modular, angled 90°

| Color of coding | Poles |
|---|-------|
|  concrete gray | 5 |

female

male

Part no.

Part no.


96.053.6254.3

96.054.6254.3

RST16I, CABLE ASSEMBLY, 2-5 POLES



TECHNICAL DATA


| | | | |
|----------------------------|----------------------------------|---|---|
| Rated current: | 16 A | Combinations: | Male to female, male to free end, and female to free end |
| Degree of protection (IP): | Type 4X / 6P | Approvals: |  |
| Lockable: | Self-locking (unlocking by hand) | Contact us for part numbers and additional options. | |
| Type of construction: | Cable screw gland | | |
| Color of coding: | All codings possible | | |
| Poles: | 2 to 5 | | |

Cable type can be selected according to application, by making use of most widely used North American cable types, such as SJOW, STOW, SOOW, or TC-ER.

RST20I, CABLE ASSEMBLY, 2-7 POLES



TECHNICAL DATA

| | | | |
|----------------------------|----------------------------------|---|---|
| Rated current: | 16 A or 20 A | Combinations: | Male to female, male to free end, and female to free end |
| Degree of protection (IP): | Type 4X / 6P | Approvals: |  |
| Lockable: | self-locking (unlocking by tool) | Contact us for part numbers and additional options. | |
| Type of construction: | Cable screw gland | | |
| Color of coding: | All codings possible | | |
| Poles: | 2 to 7 | | |

Cable type can be selected according to application, by making use of most widely used North American cable types, such as SJOW, STOW, SOOW, or TC-ER.

SPECIALTY HARNESSES

Plan with confidence & deliver on-time. Wieland engineers work with you to develop a custom and specialized solution for your application.



RST20/25, ACCESSORIES



cover piece, tethered

| Color | Poles | for Male | for Female |
|--------------|-------|---------------|---------------|
| ■ black | 2/3 | 99.416.6205.2 | 99.414.6205.2 |
| □ light gray | 2/3 | 99.415.6205.2 | 99.413.6205.2 |



cover piece, tethered

| Color | Poles | for Male | for Female |
|--------------|-------|---------------|---------------|
| ■ black | 4/5 | 99.532.0000.7 | 99.530.0000.7 |
| □ light gray | 4/5 | 99.531.0000.7 | 99.529.0000.7 |



cover piece, tethered

| Color | Poles | for Male | for Female |
|---------|-------|---------------|---------------|
| ■ black | 6/7 | 99.591.0000.7 | 99.589.0000.7 |



cover piece, untethered

| Color | Poles | for Male | for Female |
|--------------|-------|---------------|---------------|
| ■ black | 2/3 | 05.564.4453.1 | Z5.564.4553.1 |
| □ light gray | 2/3 | 05.564.4453.0 | Z5.564.4553.0 |



cover piece, untethered

| Color | Poles | for Male | for Female |
|--------------|-------|---------------|---------------|
| ■ black | 4/5 | 05.565.9953.1 | Z5.565.9853.1 |
| □ light gray | 4/5 | 05.565.9953.0 | Z5.565.9853.0 |



cover piece, untethered

| Color | Poles | for Male | for Female |
|---------|-------|---------------|---------------|
| ■ black | 6/7 | Z5.569.5353.1 | Z5.569.5253.1 |

RST20/25, ACCESSORIES



manual disconnect tool, for connectors 2 to 5 poles

| Color | Part no. |
|-----------------|---------------|
| ■ black | 05.564.8653.1 |
| ■ leaves green | 05.564.8653.7 |
| ■ concrete gray | 05.564.8653.3 |

manual disconnect tool, for connectors 6 and 7 poles

| Color | Part no. |
|---------|---------------|
| ■ black | 06.562.8753.0 |



locking slide - safety Clip

| Color | Part no. |
|-----------------|---------------|
| ■ black | 05.583.2900.1 |
| ■ concrete gray | 05.583.2900.3 |



sealing ring

| Color | Ø Size | Part no. |
|---------|------------|---------------|
| ■ black | 6 - 10 mm | 05.565.0400.0 |
| ■ black | 8 - 12 mm | 06.564.0383.0 |
| ■ black | 10 - 14 mm | 05.565.0500.0 |
| ■ black | 13 - 18 mm | 05.565.2600.0 |



mounting plate, for splitter connectors

| Color | Part no. |
|--------------|---------------|
| ■ black | 01.006.1553.1 |
| □ light gray | 01.006.1553.0 |



sample case, RST20i2...i7

| Part no. |
|---------------|
| 99.431.0000.0 |

RST® POWER

The high-current connector for demanding loads.



FEATURES


- + 4 and 5 poles
- + 53 A rated current
- + Mechanical coding

APPLICATIONS

- + Outdoor and other areas that require a high degree of protection against the ingress of water & dust
- + Higher electrical loads
- + Ideal for applications requiring a lot of power such as server farms
- + Anywhere fast changes and modular designs are needed

RST50I, CONNECTOR, 4/5 POLES

SCREW CONNECTION

| TECHNICAL DATA | | |
|----------------|-------------------------|---|
| | 4/5 Poles (screw) | |
| | IEC |  |
| Cable Ø | 15 - 25 mm / 20 - 32 mm | |
| Voltage | 250/400 V | 600 V |
| Current | 50 A | 53 A |
| Wire Size | 4 - 16 mm ² | 12 - 6 AWG |
| Protection | IP 66/67/69 | Type 6P |

female

male



straight, for cables Ø 15-25 mm

| Color of coding | Poles |
|-----------------|-------|
| ■ black | 4 |

| | |
|---------|---|
| ■ black | 4 |
|---------|---|

| Color of coding | Poles |
|-----------------|-------|
| ■ black | 5 |

| | |
|---------|---|
| ■ black | 5 |
|---------|---|

female

male

| Part no. | Part no. |
|---------------|---------------|
| 97.041.4053.1 | 97.042.4053.1 |

| | |
|---------------|---------------|
| 97.041.4053.1 | 97.042.4053.1 |
|---------------|---------------|

female

male

| Part no. | Part no. |
|---------------|---------------|
| 97.051.4053.1 | 97.052.4053.1 |

| | |
|---------------|---------------|
| 97.051.4053.1 | 97.052.4053.1 |
|---------------|---------------|

female

male



straight, for cables Ø 20-32 mm

| Color of coding | Poles |
|-----------------|-------|
| ■ black | 4 |

| | |
|---------|---|
| ■ black | 4 |
|---------|---|

| Color of coding | Poles |
|-----------------|-------|
| ■ black | 5 |

| | |
|---------|---|
| ■ black | 5 |
|---------|---|

female

male

| Part no. | Part no. |
|---------------|---------------|
| 97.041.4253.1 | 97.042.4253.1 |

| | |
|---------------|---------------|
| 97.041.4253.1 | 97.042.4253.1 |
|---------------|---------------|

female

male

| Part no. | Part no. |
|---------------|---------------|
| 97.051.4253.1 | 97.052.4253.1 |

| | |
|---------------|---------------|
| 97.051.4253.1 | 97.052.4253.1 |
|---------------|---------------|

RST50I, DEVICE CONNECTOR, M32, 4/5 POLES

SCREW CONNECTION

female

male



standard, straight, fixed in position

| Color of coding | Poles |
|-----------------|-------|
| ■ black | 4 |

| | |
|---------|---|
| ■ black | 4 |
|---------|---|

| Color of coding | Poles |
|-----------------|-------|
| ■ black | 5 |

| | |
|---------|---|
| ■ black | 5 |
|---------|---|

female

male

| Part no. | Part no. |
|---------------|---------------|
| 97.041.5553.1 | 97.042.5553.1 |

| | |
|---------------|---------------|
| 97.041.5553.1 | 97.042.5553.1 |
|---------------|---------------|

female

male

| Part no. | Part no. |
|---------------|---------------|
| 97.051.5553.1 | 97.052.5553.1 |

| | |
|---------------|---------------|
| 97.051.5553.1 | 97.052.5553.1 |
|---------------|---------------|

female

male



standard, straight, not fixed in position

| Color of coding | Poles |
|-----------------|-------|
| ■ black | 4 |

| | |
|---------|---|
| ■ black | 4 |
|---------|---|

| Color of coding | Poles |
|-----------------|-------|
| ■ black | 5 |

| | |
|---------|---|
| ■ black | 5 |
|---------|---|

female

male

| Part no. | Part no. |
|---------------|---------------|
| 97.041.5053.1 | 97.042.5053.1 |

| | |
|---------------|---------------|
| 97.041.5053.1 | 97.042.5053.1 |
|---------------|---------------|

female

male

| Part no. | Part no. |
|---------------|---------------|
| 97.051.5053.1 | 97.052.5053.1 |

| | |
|---------------|---------------|
| 97.051.5053.1 | 97.052.5053.1 |
|---------------|---------------|

RST50, ACCESSORIES



cover cap

Color

■ black

Part no.

Z5.567.5653.0



adapter ring, M40

Color

■ black

Part no.

05.568.1853.0



sample case, RST50i5

Part no.

99.628.0000.0

CABLE GLANDS + VENTED PLUGS

AFFORDABLE SEALING TECHNOLOGY FOR OUTDOOR APPLICATIONS

Cable glands and fittings provide strain relief for cables and high protection against dirt, dust, water and other liquids for electric and electronic systems, up to IP 68/ 4X. **Ventilation glands & plugs**, also known as Pressure Balance Elements (PBEs), balance the pressure difference between inside and outside of an enclosure. At the same time, these devices provide a high degree of protection of up to IP 67/ 4X. This prevents corrosion and water condensation inside the enclosure and **extends the lifetime of the entire system**.



CABLE GLANDS

Affordable strain relief and protection against water, dirt and dust.

IP 68/4X



VENTED GLANDS

Cable gland and PBE (pressure balancing element) in one product!

IP 67/4X



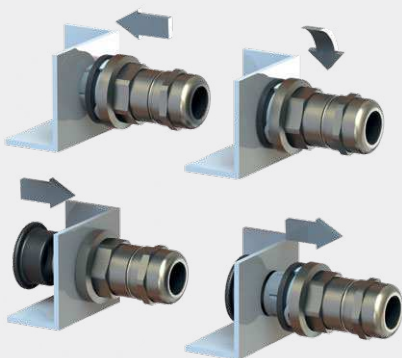
VENTED PLUGS (PBE)

Allows air to move, balancing pressure, while keeping water out.

IP 67/4X

EASY SNAP-IN!

Snap-in makes installation a breeze



BENEFITS

- ▶ High IP rating with gas permeability
- ▶ Strain Relief + enclosure protection
- ▶ Extended system lifetime
- ▶ Perfect fit with a range of sizes

FEATURES AT A GLANCE

- ▶ IP 67/68/4X
- ▶ Temperature range of -20 °C to +100 °C and UV protection
- ▶ Snap-in technology for device mounting
- ▶ Available in plastic (polyamide) and brass (nickel plated)
- ▶ Sizes in metric, PG, and NPT



wieland

NORTH AMERICAN HEADQUARTERS

Wieland Electric Inc.
2889 Brighton Road, Oakville
Ontario, Canada L6H 6C9

Tel +1 905 829 8414
Fax +1 905 829 8413
technical.support@wieland-electric.com



34.205.0166 04/21

Worldwide in over 70 Countries:

www.wielandinc.com